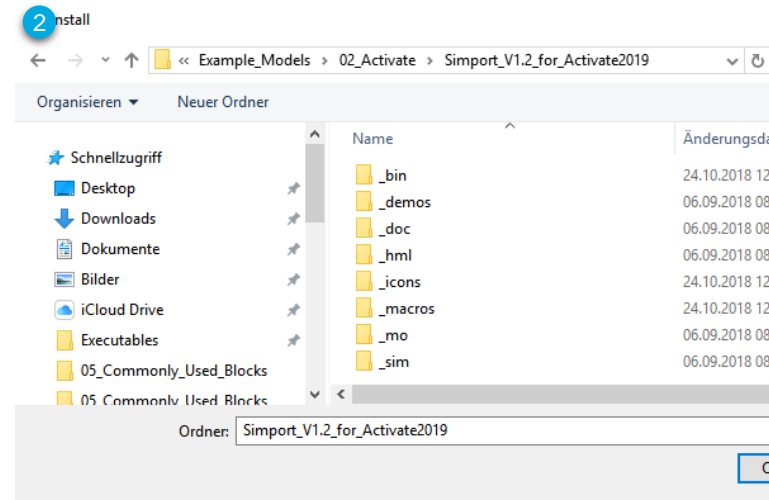
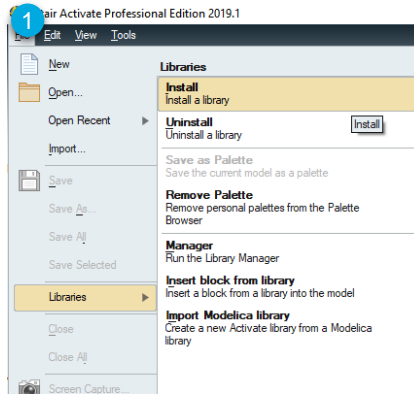


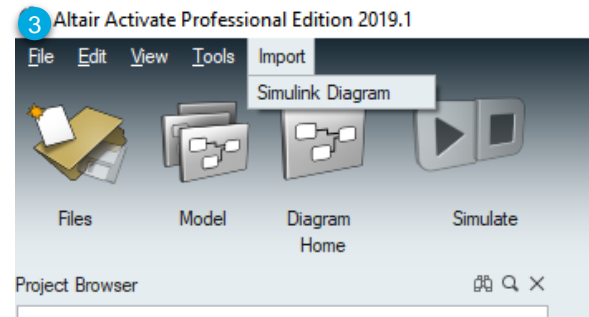
INSTALL SIMPORT LIBRARY

- 1 Installation of the Simport Library via *File* → *Libraries* → *Install (a library)*
- 2 Select corresponding folder
- 3 Check new menu entry *Import* → *Simulink Diagram*



Folder:

... \Part_X_Simport\Simport_V1.2_for_Activate2019

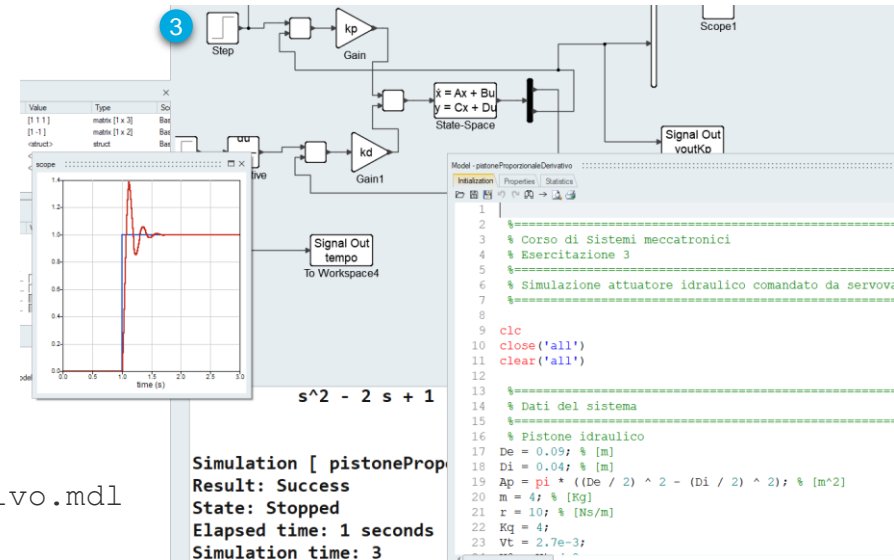
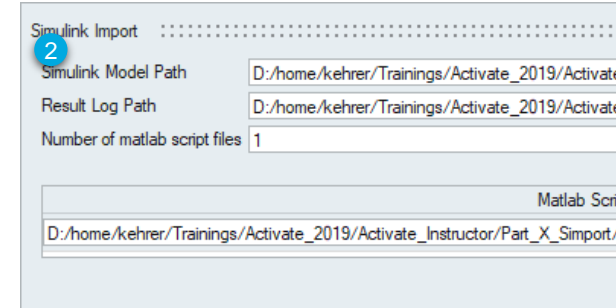


IMPORT OF A SIMULINK BLOCK DIAGRAM

- 1 Import of a *.mdl file (Simulink model) via *Import* → *Simulink Diagram*
- 2 Select corresponding
 - Simulink diagram
 - Result log path
 - Corresponding *.m files, if necessary
- 3 Check
 - Model structure
 - Command window for warnings/ error messages
 - Model Initialization
 - Simulation incl. results

Model File:

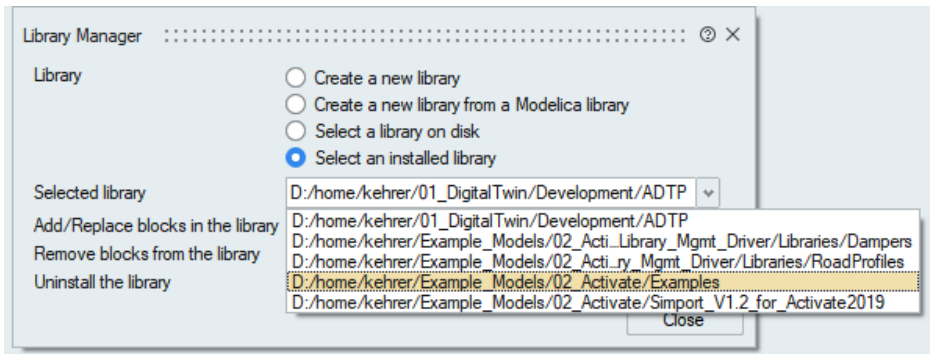
...\Part_X_Simport\pistoneProporzionaleDerivativo.mdl



CHECK FOR INSTALLED LIBRARIES

Option 1: Library Manager

- Open the menu *File* → *Libraries* → *Library Manager*
- Set checkbox for *Select and installed library*
- Open dropdown menu for *Selected library*



Option 2: Uninstall libraries

- Open the menu *File* → *Libraries* → *Uninstall (a library)*
- Check the overview of installed libraries

